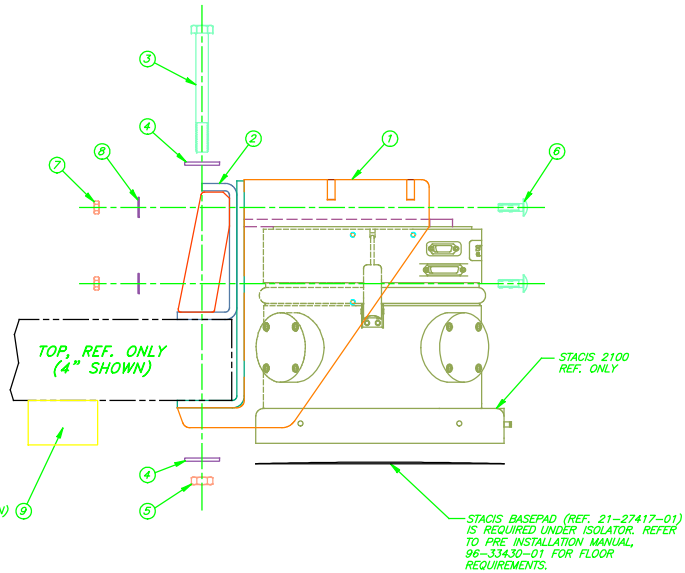
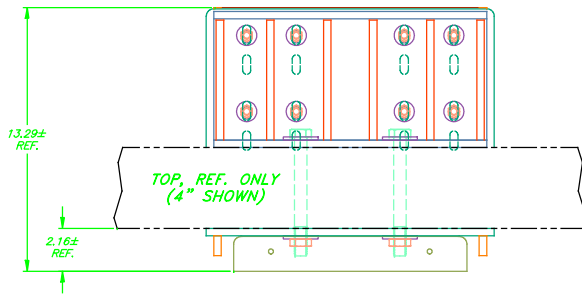
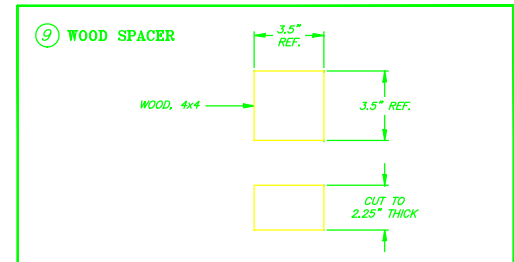
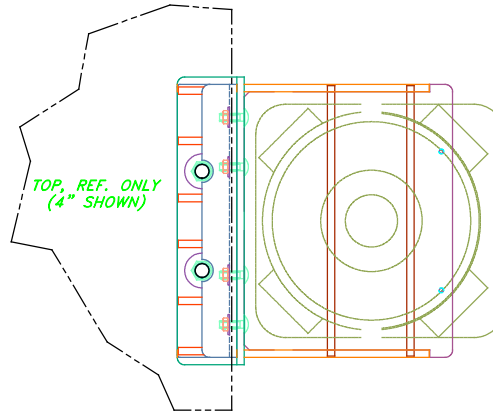


REV.	DATE	DESCRIPTION
A	08-08-18	GH ECOM 1/00R CHANGED FRONT VIEW TO REFLECT CHANGES TO ITEMS 1 AND 2 (SLOTS).
B	10-08-18	GH ECOM 1/00R 1/11R ADD ITEM 9 (WOOD SPACER) CHANGE NOTE 1
C	08-03-13	GH ECOM 3/00R ADD TAPPED HOLES IN VIEW REFLECTING CHANGES TO ITEM 1, 63-37942-01.

FLOOR PLATFORM INSTALLATION PROCEDURE

1. PLACE 2.25" THICK WOOD SPACERS PROVIDED WITH LIFHOODS (ITEM 9) IN THE FINAL LOCATION OF THE PLATFORM.
2. PLACE PLATFORM ON SPACERS ENSURING THE SPACERS DO NOT INTERFERE WITH HOLES IN THE PLATFORM.
(NOTE: TYPICAL PLATFORM WEIGHT IS 800-2000 LBS PROFESSIONAL RIGGERS AND/OR RIGGING EQUIPMENT IS REQUIRED FOR MOVING PLATFORM.)
3. RIG THE INSTRUMENT ON TO PLATFORM.
4. FASTEN LIFHOODS TO PLATFORM WITH HARDWARE PROVIDED, PER THIS DRAWING.
5. PLACE STACIS BASEPADS (NYLAR SANDWICH) ON FLOOR IN ISOLATOR LOCATIONS.
6. PLACE STACIS ISOLATORS ON TO BASEPADS. IF REQUIRED, SLIGHTLY RAISE PLATFORM WITH WEDGE MOUNTS OR EXTERNAL JACK.
7. FLOOR PLATFORM IS NOW READY FOR TMC TO COMPLETE SET UP, OPTIMIZATION AND MEASUREMENT OF STACIS SYSTEM. DO NOT DISCONNECT CABLES TO ISOLATED INSTRUMENT UNTIL FINAL VIBRATION MEASUREMENT IS COMPLETE.



MATERIAL LIST		ASSEMBLY VARIATION		01	02
No	PART NUMBER	DESCRIPTION	qty	alt1	alt2
	65-37944-01	LIFHOOD KIT/ASSY,INSTRUCTIONS 4" TOP			
	65-37944-02	LIFHOOD KIT/ASSY,INSTRUCTIONS 2.5" TOP			
1	63-37942-01	LIFHOOD WELDMENT	1	1	
2	63-37943-01	BRACKET, LIFHOOD	1	1	
3	49-16448-333	5/8-11X6.0 HX HD CAP SCREW, GRADE 8	2		
4	49-16448-334	5/8-11X4.5 HX HD CAP SCREW, GRADE 8	2		
4	WUSS-5/8-7	5/8 USS WASHER	4	4	
5	NHEX-5/811-7	5/8-11 HEX NUT	2	2	
6	6048-3/816-202	3/8-16X1.25 CARRIAGE BOLT	2	2	
7	NHEX-3/816-7	3/8-16 HEX NUT	2	2	
8	WFLT-3/8-7	3/8 FLAT WASHER	2	2	
9		WOOD SPACER (4X4 CUT TO 2.25" LONG)	3	3	
10					
11					

TMC Precision Manufacturing Corporation
15 Centennial Drive, Peabody, MA 01860, USA
Tel: 978-532-6330, Fax: 978-531-8882

PROPRIETARY INFORMATION
This drawing is the property of TMC. It contains proprietary information which may not be copied or divulged to third parties without TMC's written consent. It may be used to estimate and/or purchase parts from TMC.

TITLE: LIFHOOD KIT/ASSY, INSTRUCTIONS

REF: TLR0005 UNLESS NOTED, 3220+0.004/20+0.02/FRAC000+01/16 c=0.07

MATERIALS: SEE DRAWING
FINISH: SEE DRAWING

DRW: GH
CHK: D

DWG NO. 65-37944
REV. C